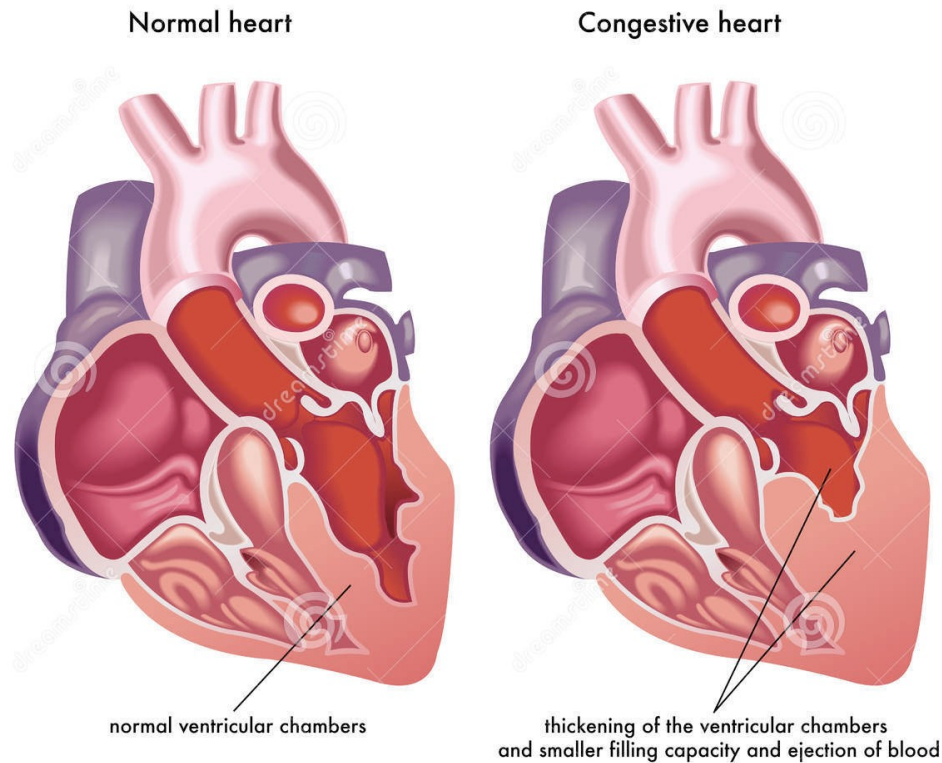


# HEART FAILURE

---

**Heart failure (HF)**, often called **congestive heart failure (CHF)** or **congestive cardiac failure (CCF)**, occurs when the heart is unable to provide sufficient pump action to distribute blood flow to meet the needs of the body.



Heart failure can cause a number of symptoms including shortness of breath, leg swelling, and exercise intolerance.

# HYPERTROPIC AND REMODELING NEURO-HORMONAL MECHANISMS

